



insight graphic systems

Die Co-Ordinator DC 1060 / 1260 / 1450

a revolution in die registration
for hot foil stamping, embossing & cut/crease/emboss





Die Co-Ordinator DC1060

Turbocharge your press makeready with Die Co-Ordinator – proven technology that has reduced overall setup by more than 50%!

Die Co-Ordinator requires no modification to presses, honeycombs, dies or hooks, making it the most flexible and cost-effective die lock-up system on the market today.

So improve turnaround and save time by minimizing makeready and maximize profits by reducing costs with Die Co-Ordinator.

Features

- **Point & Click** means that a job can be programmed in under 2 minutes
- **Self-datuming** servo motor driven linear slides mean that Die Co-Ordinator recalibrates itself every job eliminating mechanical variation
- **Repeatable, consistent movements** accurate to 0.005 mm combined with;
 - Image magnification to 0.03 mm per pixel and;
 - Automatic compensation for board stretch and heat expansion plus;
 - Fingerprinting each honeycomb to each press enables you to achieve the highest level of die registration possible.
- **Job database store** >100,000 jobs allows you to recall a re-order in seconds
- **Robust & rugged construction** ensures that Die Co-Ordinator will match and exceed the lifetime of your presses
- **Adjustable guides** ensures that Die Co-Ordinator can work with all your presses



Personal Assistant programs a job in seconds. Point & Click No measurement required



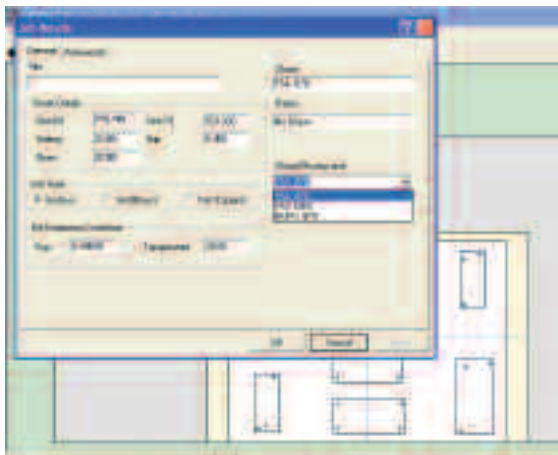
AutoScan scans images from the printed sheet to create keylines. Overcomes board stretch



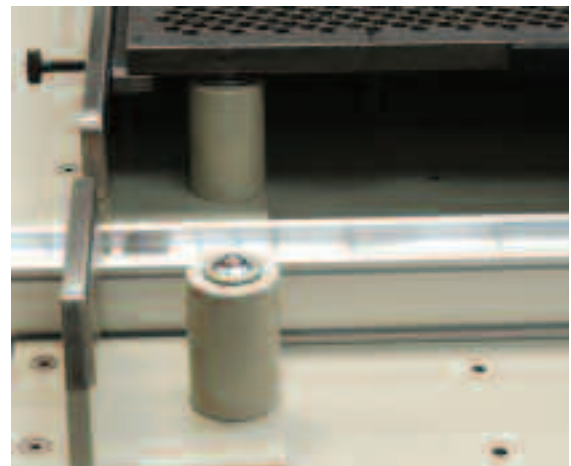
Keyline Registration position dies accurately



enables the operator to
ly on the honeycomb



Dynamic Profiling allows press and honeycomb
characteristics to be fingerprinted reducing variation



Adjustable Back Guides let you lock up any size
of honeycomb off press.



Scan



Keyline



Register



Lock Up

Technical Specifications DC1060/DC1260/DC1450

Honeycombs Iijima MJ 1040, Saroglia 740

Bobst SP 76 BM, SP 126 BMA, SP 102 BMA, 1260

Brause, Kluge, Geitz, Iijima, SBL

Voltage 200 – 240 volt
single phase
(plus 110 volt USA)

Dimensions (LxWxH) 1.6m x 1.4m x 2m
DC1060 5'4" x 4'8" x 6'6"

Repeatability 0.005 mm
0.0002"

Resolution 0.03 mm
0.0012"



230 Highway 35
Red Bank, NJ 07701-5910
Tel: 732-933-4865
Email: mdebard@dgmna.com
Web: www.dgmna.com



insight graphic systems ltd

Shore Road Kilmun
PA23 8SE Scotland
Tel: +44 (0)1369 840088
Email: info@insightgraphicsystems.com
Web: www.insightgraphicsystems.com

*Savings quoted are based upon feedback reported by our customers

Illustrations, measurements and weights are subject to change. The manufacturer reserves the right to make changes in design, equipment and accessories as deemed necessary.